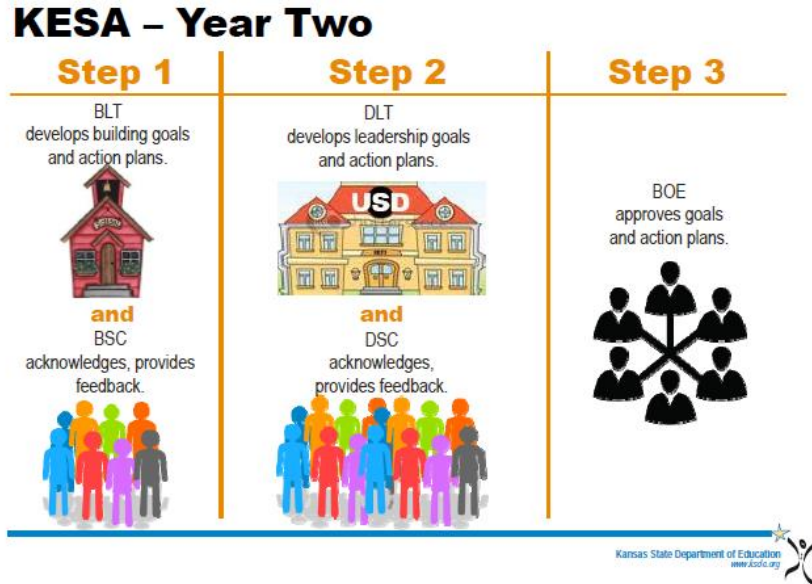


Director of Student Learning
 Jennifer Gatz
 Board Report September 2017

KESA Accreditation Cycle

Our first official year utilizing the Kansas Education Systems Accreditation is beginning with the 2017-18 school year. Last year our district spent the year learning about the accreditation model in what was called zero year. As districts begin the new accreditation cycle we can designate what year we would like to start on within the five year cycle. In the spring our district leadership team decided to start on cycle year two. During year two of the cycle we will focus on setting district and building goals and writing action plans. These plans will be shared with the individual building site councils as well as the district site council and BOE as noted in the graphic below.



As a district we have decided to focus on the areas of Rigor and Relevance. Relevance contains the components of curriculum, instruction, student engagement and technology. Rigor contains the components of career and technical education, professional learning, resources and data. Our goals and action plans will focus on these areas. Throughout the year the building leadership teams and district leadership team will be working on developing and sharing these plans.

MTSS Update:

As the new school year begins all of our buildings have been implementing a Positive Behavior Intervention Supports (PBIS) model to encourage positive behavior. The students in all buildings have been taught the expectations which are reinforced daily in the classrooms. Students throughout the year will be recognized for displaying appropriate behaviors aligned with building expectations.

In the areas of Math and Reading our students recently completed the FastBridge screening assessments. We will be looking at this assessment data to determine students that may need additional support during MTSS in September during our district building leadership team meeting and our early out PLC.

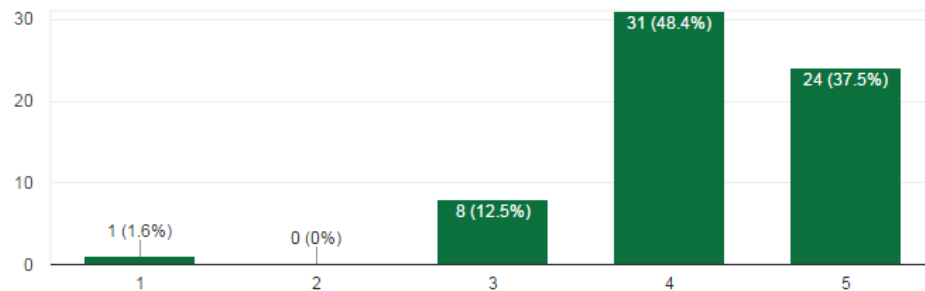
Back-To-School In-service:

We had a successful day of learning on August 14th. Following the in-service, a survey was shared with teachers to solicit their feedback regarding their professional learning on this day. This information will be used to plan future professional development. We had 64 teachers complete the survey. The responses we received were positive. As a district we continue to work towards providing individualized professional learning which meets the needs of our staff members as aligned with our district strategic plan discussed at the August BOE meeting. I have included two graphs which display the responses for one question relating to each of the two sessions that were held on this day. **A rating of a 1 was Strongly Disagree and a 5 was Strongly Agree.**

Introduction in Auditorium

1. The content was relevant to my professional learning needs.

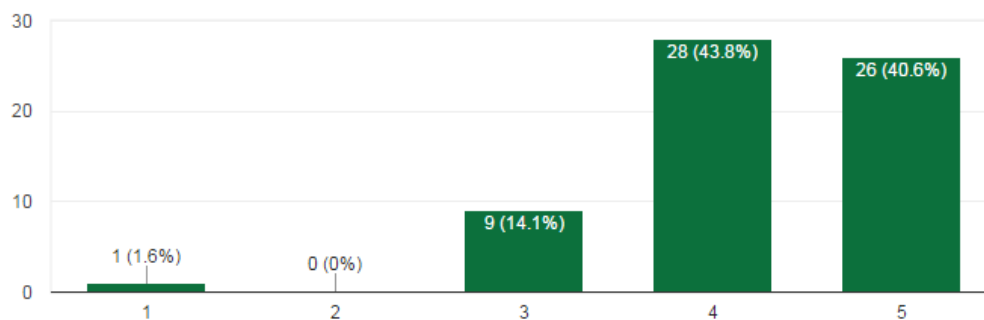
64 responses



Content/Curriculum Team Meetings

6. The content was relevant to my professional learning needs.

64 responses



Science State Assessment Results:

This is the first year in several years that science state assessment results are being released. Our students took the science assessment last spring in grades 5, 8 and 11. The science assessment results should be available soon on the KSDE Data Central website which can be accessed at <http://datacentral.ksde.org/>.