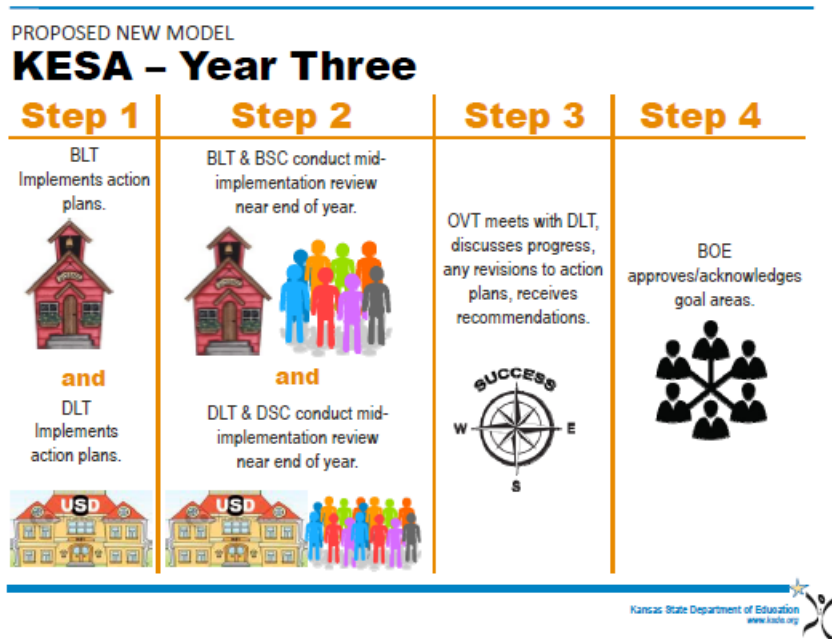


Director of Student Learning
Jennifer Gatz
Board Report September 2018

KESA Accreditation Cycle

As we begin the 2018-19 school year we are entering Year Three of the Kansas Educational System Accreditation process. Our District Leadership Team and our Building Leadership Teams have worked with their staff to create our action plans which we will be implementing throughout our accreditation cycle. Throughout the process we will continue to reflect on our plan and adjust as needed. (See graphic below) Our Outside Visitation Team (OVT) visit will take place on April 13th, 2019. You can find our [action plans here](#). I plan to update the board on our action plans at the board meeting on September 10th.



MTSS Update:

As the new school year begins our buildings continue to implement a Positive Behavior Intervention Supports (PBIS) model to encourage positive behavior. Each building has been teaching expectations and working on their social/emotional behavior intervention protocols. We will be giving the MySAEBRS and SAEBRS social/emotional assessments at the end of September. We will utilize this assessment data along with office referrals, grades and attendance to identify students that may need additional support in the areas of social/emotional learning. The social/emotional component of our MTSS process will continue to be a focus as work to ensure we are meeting the needs of all students.

In the areas of Math and Reading our students recently completed the FastBridge screening assessments. We will be looking at this assessment data to determine students that may need additional support during MTSS.

Todd Evans | Superintendent | evanst@usd113.org

Jennifer Gatz | Director of Student Learning | gatzj@usd113.org

1619 S. Old Hwy. 75 | Sabetha, KS 66534 | Phone: 785.284.2175 | Fax: 785.284.3739 | Website: usd113.org | Email: boe@usd113.org

During our building leadership team meeting and our early out PLC we will be analyzing the data to determine next steps for working with students that are performing below benchmark. We have several new intervention programs that we will begin utilizing this fall. Throughout the process we are using our data to help us determine the effectiveness of our interventions and our Tier 1 (core curriculum). Throughout sustainability we will continue to revise our process with the goal of meeting the needs of each student.

Social Emotional Character Development

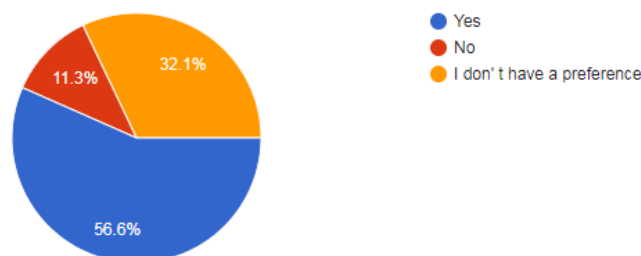
Aligned with the Kansas Can Vision our district is focusing on measuring and supporting student's social emotional character development. In each building we are implementing a social emotional curriculum. At the elementary (PK-5) level our teachers began implementing the Second Step curriculum during the 2017-18 school year. Our teachers at this level will continue utilizing this curriculum which includes a bullying prevention component. At the secondary level (6-12) we are utilizing the [College and Career Competency Framework](#). The first competency which we are focusing on is Self-Regulation. In each building teachers are teaching nine introductory lessons on self-regulation. Each teacher will write a plan to implement within their content area which will support the use of self-regulations skills by their students during our October in-service.

Back-To-School In-service:

We had a successful day of learning on August 14th. Following the in-service, a survey was shared with teachers to solicit their feedback regarding their professional learning on this day. This information will be used to plan future professional development. We had 53 teachers complete the survey. We continue to utilize this feedback to plan for future in-service and adjust our professional learning. As a district we continue to work towards providing individualized professional learning which meets the needs of our staff members as aligned with our district strategic plan. This year we moved our district in-service to accommodate our Nearpod presenter. I asked our staff to provide feedback on having this in-service on the second day back instead of the first day. Below is the graph of their responses.

I liked having the district in-service on the second day back instead of on the first day.

53 responses



MTSS Conference and Sabetha Elementary Presentation:

Shout out to our teachers that continue to be a model of lifelong learning by attending professional learning. We had 6 members of our staff attend the MTSS pre-conference on Collective Efficacy and 7 members of our staff attend the full MTSS conference. Through our work with TASN, we were reimbursed for our attendance at this conference. The work we have done at Sabetha Elementary was recognized and they were asked to present at the Kansas MTSS conference which hosted over 1300 Kansas educational professionals. Sara Toedman, Katie Heiman and Anne Werner were the key presenters during their session highlighting the work Sabetha Elementary has done with their Walk-To-Intervention model.